



**Barnsbury Primary School**  
**Year 5**  
**Parents' Information Afternoon**  
**16<sup>th</sup> September 2025**



# Welcome!

The Year 5 Team

**5T**

**Mrs Twiston-Davies**

**Mrs Norfolk**

**TA - Mrs Living, Miss Beck**

**5D**

**Mrs Darne**

**TA Miss Armiger, Miss Marie**

**French - Madame Kidd**

**Music - Mrs Norfolk**

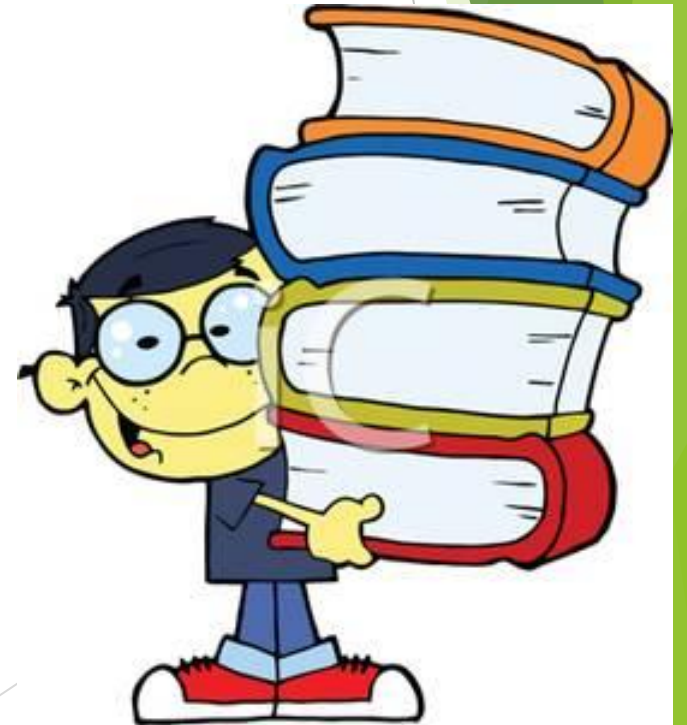
**Year 5/6 Senior Leader**

**Mrs Laura Gilkerson**



# English

- School focus on writing
- Extended Writing
- Reading Comprehension
- Punctuation & Grammar
- Guided Reading /  
Destination Reader

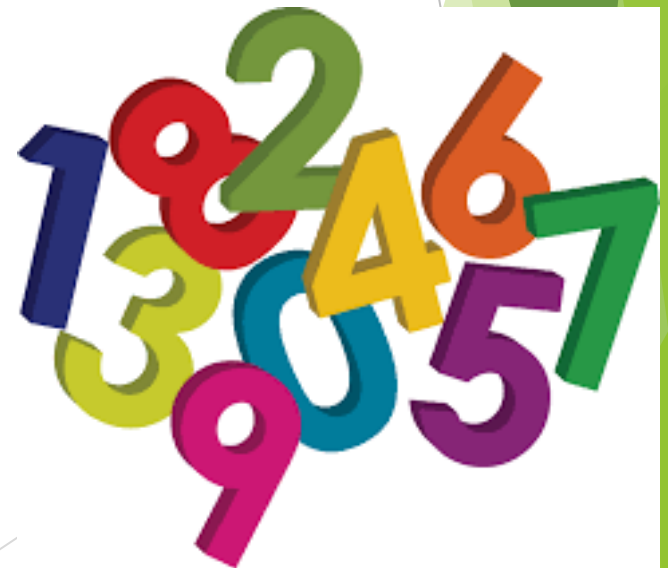


# Spelling

- ▶ RWI spelling
- ▶ Groups
- ▶ Words to learn at home  
(Red/Orange Words)
- ▶ Video on Monday- starting at  
8:55.

# Maths

- Times tables (up to 12x)
- White Rose
- Numicon – concrete, pictorial, abstract
- Maths games (TTRockstars)



# History and Geography

These are taught alternately through the year.

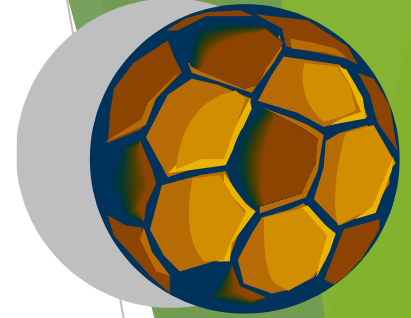
The Ancient Greeks, Vikings and Tudors

What is life like in the Alps? Why do oceans matter? Why does population change?

# Homework

- ▶ Reading (5x per week). Diaries are checked weekly.
- ▶ Spellings given on Friday and tested Friday.
- ▶ English and Maths (Wed)
- ▶ Topic (Half-termly, optional)

P.E.-



Indoor - Wednesday  
Outdoor - Tuesday

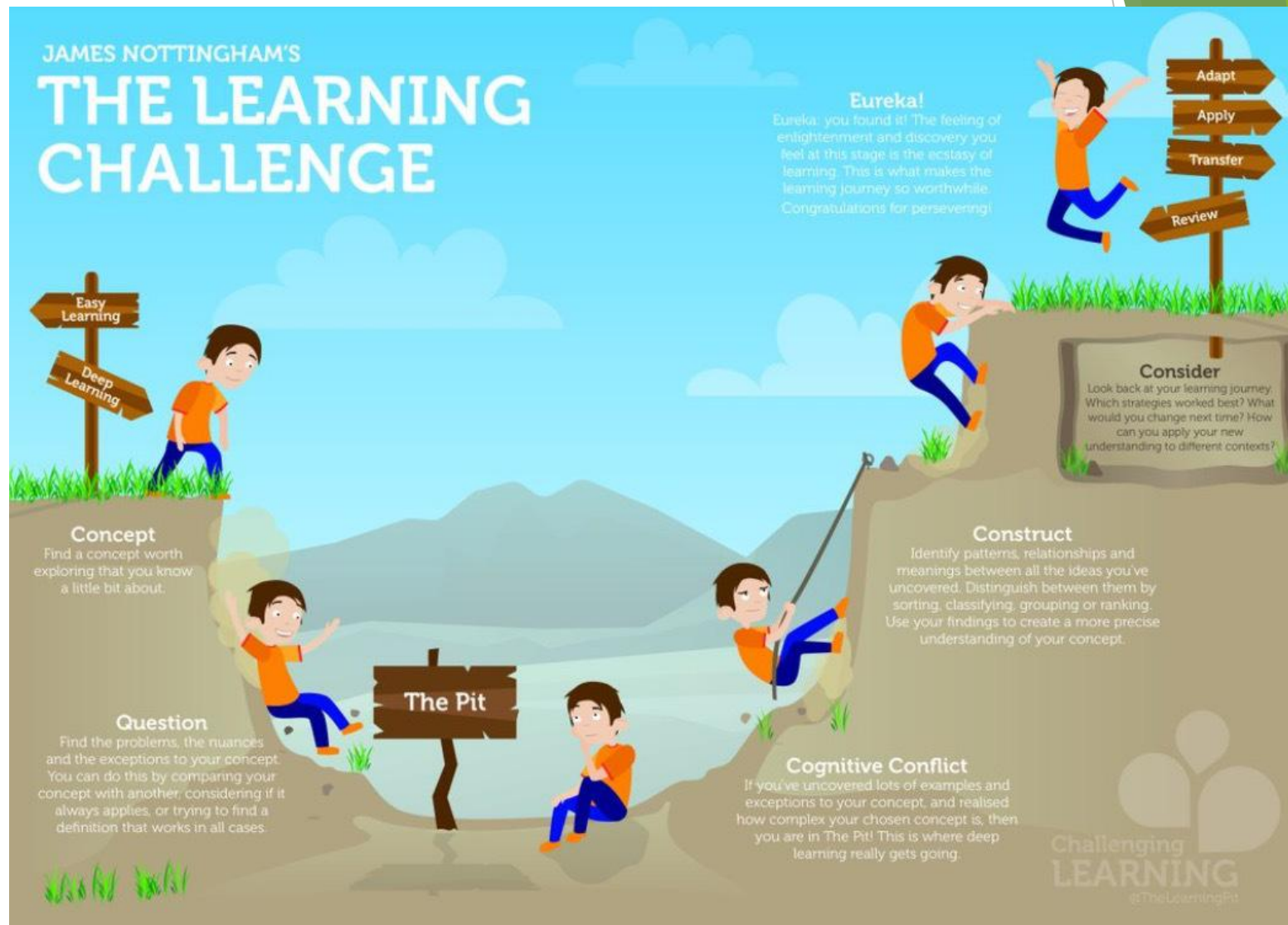


# Uniform



Under the Surrey County Council Health and Safety regulations, children are not allowed to take part in any physical activities whilst wearing **earrings**. It is also against the safety regulations to cover earrings with plasters. Staff are not allowed to remove earrings for children, so your child must be able to remove their earrings themselves.

# Growth Mindset



# Internet Safety



## What can be done at home?

- ▶ PC in a common area
- ▶ Monitor the sites they are accessing.
- ▶ Be clear on the age restrictions for social media and games.
- ▶ <https://www.thinkuknow.co.uk/parents/>

# Reminders

Remember to label everything!

- ▶ ALL clothes
- ▶ ALL bags
- ▶ Drinks bottles  
(these should only contain water).
- ▶ Lunch boxes
- ▶ Coats





# Reminders

**One way traffic system** - We encourage all those who come by car to park ( a distance from the school) and walk or enter via Acacia Avenue and only exit on Almond Avenue. We try hard to reduce congestion.

**Park considerately** of our neighbours.

Remember - **social media** is a great source of communication between parents if you need to check PE days or what homework has been set, but if you have a concern or a complaint please do come in to school and speak to staff to resolve it.

## Car Parks

Please can parents not walk through the school's car parks but use the footpath around the side of the car park to enter the school building and so

There is also a one-way route we are trying to enforce around the school during drop-off and collection times. Please see the map below:

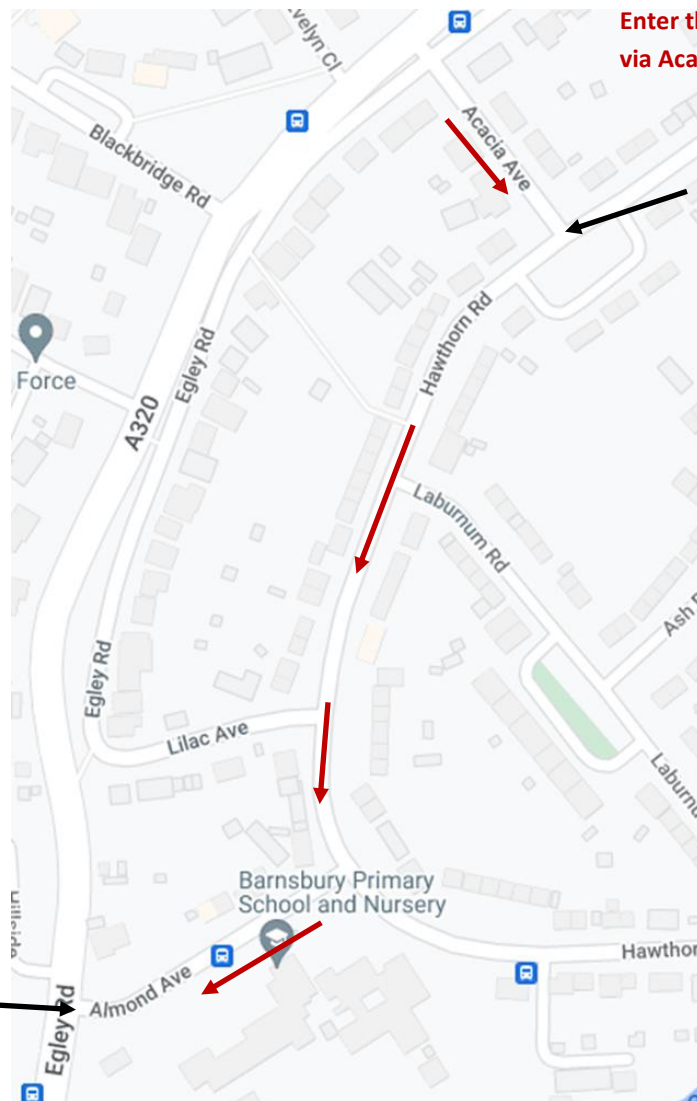


Keep everyone safe—drive slowly around the estate.



Consider our neighbours and all parking restrictions when leaving your car. Yellow lines, driveways and verges are not appropriate places to park your car.

Please don't enter the estate here—exit only.



Enter the estate via Acacia Avenue



To ease congestion around the school, turn left here.

One-way route turning right onto Hawthorn Road, then right into Almond Avenue, exiting onto Egleby Road.

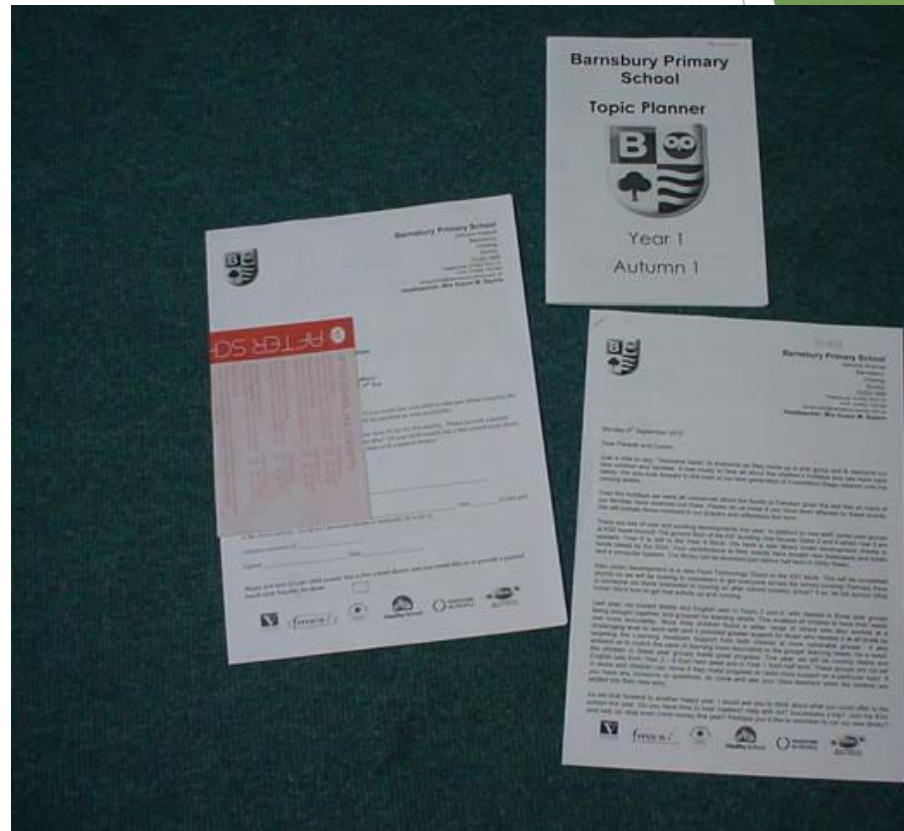


The pavements are busy with walkers, prams, scooters, bikes and more. Be alert to keep everyone safe.

# Communication & Information going home

Letters and other information will go out via Parent Mail.

You can also check this information on the school website.



# Introducing our Home School Link Worker— Mrs Ali

Our main aim at Barnsbury Primary School and Nursery is to provide a confidential support service for you and your family, to encourage all children to enjoy school and learning, feel happy, secure and safe.

The role of a Home School Link Worker is to support our Barnsbury families. With your consent, they can help you:

- Discuss any worries or concerns regarding the school or your children.
- Support families whose children are experiencing difficult times, are anxious, finding school a challenge or reluctant to come to school.
- Support parents who are experiencing difficulties in managing their child's behaviour.
- Provide support to families on issues that have an impact on their family life e.g. domestic violence, drug or alcohol addiction.
- Help to improve attendance and communication between families and school.
- Provide guidance to Parents/Carers to other sources of help, advice and support available to your family.
- Provide information on local and community support groups for Parents and Carers.
- Help access information and benefits.
- Offer guidance and parenting support.

If they can be of any assistance, please do not hesitate to contact them by either completing a referral form from our school entrance, by email at [HSLW@barnsbury.surrey.sch.uk](mailto:HSLW@barnsbury.surrey.sch.uk) or via your class teacher.



# Help needed!

- Reading (*even if it is just 15 minutes before picking up your child*)
- Cooking
- Trips - INTEC (Spring Term)
- Swimming (Spring term)



# Dates to remember

- INTEC trip Wednesday 14<sup>th</sup> January
- 5D Class Assembly: Friday 13th February
- 5T Class Assembly: Friday 17th October
- Parents Evening: November



Thank you for coming!

We look forward to meeting  
you again at our Autumn Term  
Parents' Evenings

If you need to see us before  
this time, please ask at the  
office or ring in!