



Barnsbury Primary School and Nursery

Year 3 2025

Parents' Information



Welcome!

The Year 3 Team

3MC

Mrs McConville

Learning Assistant – Mrs Ramos

SNA – Mrs Akram



3M

Miss Stubbs (until half term) then Miss Mollet

Learning Assistant - Mrs Cleary

French- Mrs. Kidd

Music- Mrs. Norfolk

English

Class English lessons



- Writing skills
- Extended Writing
- Reading skills
- Grammar
- Spelling Programme RWI
- Destination Reader
- Speaking and listening



Maths



Multiples e.g.. 1, 10, 100 more/less than a given number

Place value (hundreds, tens, units)

Read, write, order and compare numbers up to 1,000

Adding and subtracting 3 digits

Times tables; 2,3,4,5,8,10 including division facts

Multiple 2 digits by 1 digit.

Count up and down in tenths.

Use small denominators.

Equivalent fractions.

Compare and order fractions.

Compare, add and subtract lengths (m,cm,mm), mass (kg,g)
volume/capacity (l,ml)

Measure perimeter of simple 2-D shapes

Add/subtract using £ and p.

Tell the time, including Roman numerals.

Estimate and reads time to nearest minute.

Number of seconds in a minute, days in a year, number of days in each
month, year and leap.

Word problems on all of the above



Homework – Minimum expectations



Reading – 5 times per week

Please keep record in reading diary

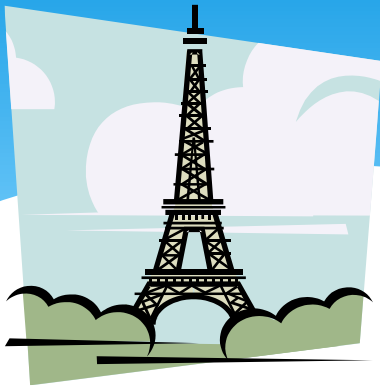
English & Maths via SeeSaw

MyMaths & TTRS

Passwords in their reading diary

Times tables (3, 4 and 8) and Number Bonds Practise

All homework will be set on a Wednesday and completed by the following Wednesday. Spelling words also sent home and full list also on school website. These will be tested each week.



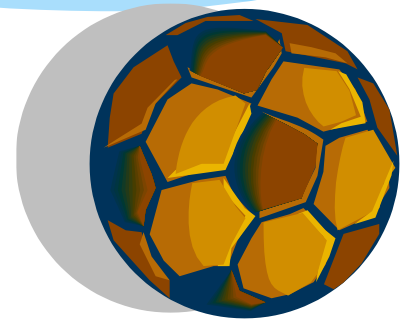
P.E.

Wednesday afternoon outdoor
Friday afternoons indoor

PPA

Wednesday afternoon
French, music, PE—
Mrs. Kidd, Mrs. Norfolk

Birthdays – No sweets



Reminders



Remember to label everything.

- * ALL clothes
- * ALL bags
- * Water bottle
- * Lunch boxes
- * Coats

Always remind your child to bring a bag to school. There is nearly always something to take home.



Communication & Information going home



All group communications are now sent via ParentMail, generally still on a Friday afternoon for items such as trips/swimming, information letters, parent planners. Where a permission reply is required, this is now also done online by the parent therefore paper copies are not required. Payment will also be made on ParentPay for the trip.

For you to have access to this, it is advised to sign up to ParentMail, via a link that we will send to you.

School meals need to be paid via Parentmail.



Reminders

- 1) Reminder of **one way traffics system** - we encourage all those who come by Car to park (a distance from the school) and walk or enter via Acacia Avenue and only exit on Almond Avenue. We try hard to reduce congestion.
- 2) **Park considerately** of our neighbours. Last year we saw a significant increase in complaints about poor parking, blocking drives, parking on grass etc.
- 3) **Outdoor learning.** If possible, please could your child have a pair of wellies to keep at school.

Reminders



- Thursday, 2nd October – Stone Age workshop
- Friday, 24th October – Year 3 Harvest Production
- Friday, 17th April – Year 3 trip to Wisley
- Friday, 8th May – 3MC class assembly
- Friday, 26th June – 3M class assembly
- Summer Term – Swimming 3MC starts Monday 20th April; 3M starts after half term break



Reminders

Parent helpers – we would love your help!

Please let your class teacher know if you are able to help in class at anytime and if you could help with cooking on a regular basis.

Thank you.

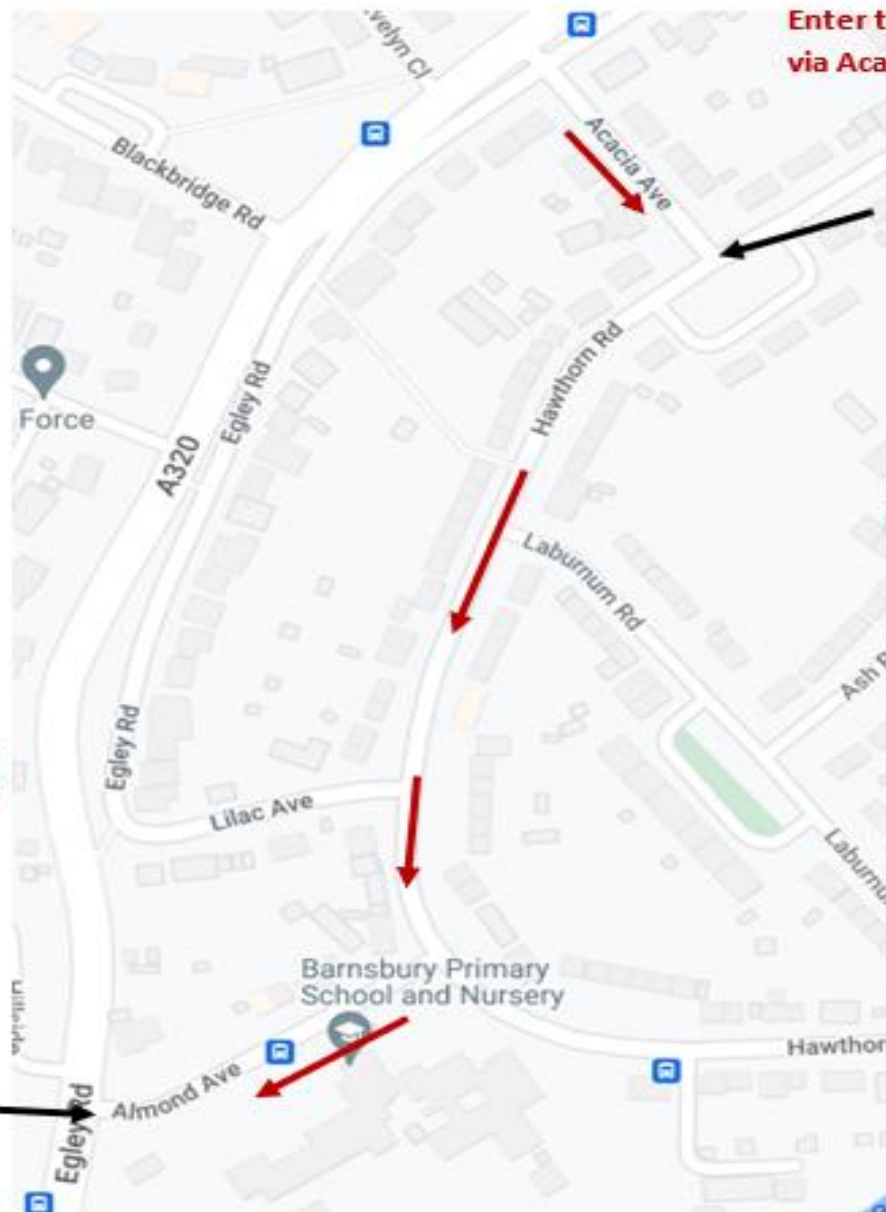


Keep everyone safe—drive slowly around the estate.



Consider our neighbours and all parking restrictions when leaving your car. Yellow lines, driveways and verges are not appropriate places to park your car.

Please don't enter the estate here—exit only.



Enter the estate via Acacia Avenue



To ease congestion around the school, turn left here.

One-way route turning right onto Hawthorn Road, then right into Almond Avenue, exiting onto Egley Road.



The pavements are busy with walkers, prams, scooters, bikes and more. Be alert to keep everyone safe.

Any questions?

