



Welcome to Reception's Parent Information Meeting

September 2025

The Foundation Stage Team

* Miss Beth Freeland
Oak Class Teacher
Early Years Leader



* Miss Natalie Paice
Pine Class Teacher



The Foundation Stage Team

Oak Class Learning Assistant

* Mrs Arbab



Oak Class (Wednesday's)

* Miss Powell



Pine Class Learning Assistant

* Mrs Priestman



Pine Class (Wednesday & Friday PM)

* Mrs Santoro



The Early Years Foundation Stage

There will be Prime and Specific areas of learning which are included in all the topics covered each term.

Prime Areas

- * Personal, Social & Emotional Development
- * Physical Development
- * Communication and Language

Specific Areas

- * Literacy
- * Mathematics
- * Understanding the World
- * Expressive Arts & Design

General Information

- * One way system when driving: Enter Acacia Avenue, turn right onto Hawthorn Road, follow the road round and turn right onto Almond Avenue.

- * PE will be every Tuesday. Send your child into school wearing their PE kit. They will remain in this all day. Please remove earrings or jewellery on PE days.

- * Please bring named water bottles daily.

- * Milk is provided by Cool Milk. Ensure you sign up via Cool Milk in order to receive this each day.

- * Fruit is provided for morning snack.



Remember to label everything.

- * ALL clothes
- * ALL bags
- * Drinks bottles
(these should only contain water).
- * Lunch boxes
- * Coats
- * Wellies

Always remind your child to bring a bag to school. There is often something to take home. They should also bring a water bottle daily and a coat.

Reminders



Independence

In Reception, we encourage the children to be independent.

- * Entering the classroom by themselves.
- * Putting their water bottles on the trolley.
- * Keeping their belongings in their bag/on their peg.
- * Peeling fruit.

Please support your child in developing these important skills.

- * Getting dressed & undressed.
- * Toileting and washing hands.
- * Putting on their coat and shoes.



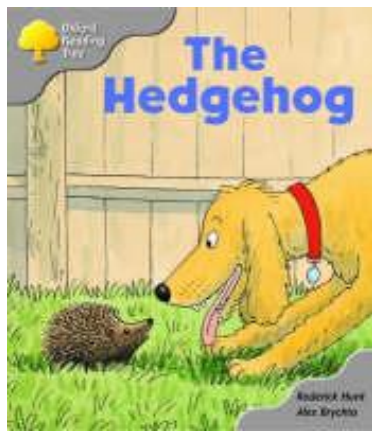
Behaviour

- * Whole school positive behaviour approach. Ready, respectful, safe. Fantastic walking.
- * Certificates – Star of the Week, Values, Effort certificate each week, Wow cards.



Reception so far





Supporting Your Child with reading



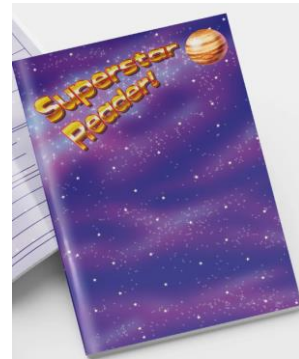
Read for about 5-10 minutes 5 times a week.
Please record each time you read with your
child in their reading diary.

Talk about the pictures.

Match the word to the sentence.

Play games using the book.

You can access levelled e-books on Oxford
Owl.



Supporting Your Child with phonics



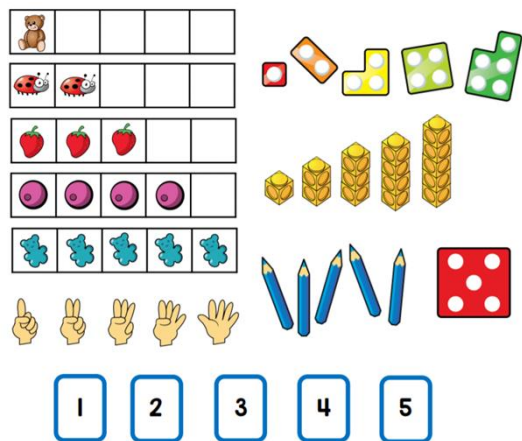
Your child will learn new sounds each week. We will let you know our focus sounds, on the board in the playground. Please support your child and practise these at home. We will also learn to blend and groups will be differentiated to support learning.





Maths in EYFS

Maths will be taught through play and will move through the CPA approach – which is used throughout the school.



Our first schemes of learning are match, sort and compare, talking about measure and patterns.



Communication & Information

Please check your child's bag every day. Look out for the school newsletters, and any additional messages sent via ParentMail.

Please communicate any information you wish to inform us of via the school email:

info@barnsbury.surrey.sch.uk If something is urgent, please speak to us at drop off/pick up. Any other queries, please write in your child's reading diary which we will check at least once a week.

Every term you will receive a parent planner which informs you of the topics and areas of learning we will be covering and suggestions for support at home.



Have you registered?

It's an easy, convenient way to receive school messages.

You can:

- ✓ Receive messages on your computer, tablet or mobile
- ✓ See all your messages in one handy, undisturbed feed
- ✓ Link to other schools or clubs that also use ParentMail
- ✓ Keep up to date with your school calendar
- ✓ Authorise trips or permissions online

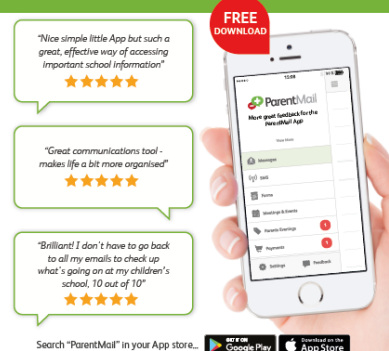


Registering is really easy...

Ask your school office to send you a registration message



Download the ParentMail App
for the best way to pick up school messages



"Nice simple little App but such a great, effective way of accessing important school information!"



"Great communications tool - makes life a bit more organised"



"Brilliant! I don't have to go back to all my emails to check up what's going on at my children's school, 10 out of 10"



Search "ParentMail" in your App store...



Helping in School

- * Listening to children read
- * Arts and crafts
- * Cooking
- * Gardening
- * Playing games
- * School trip (June)

To help in school you will need to be DBS checked,
please enquire via the school office.



Is your household income less than £16,190 a year?

What is Pupil Premium?

Pupil Premium funding from the government is given to schools to help pupils reach their full potential, regardless of their background or financial situation. It's provided for pupils who:

- Are registered for free school meals
- Have been registered for free school meals at any point in the past 6 years
- Are, or have been, in care or
- Have parents in the armed forces.

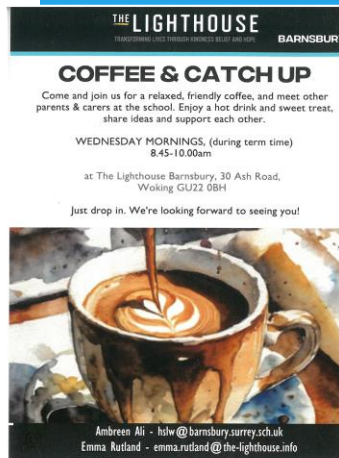
At Barnsbury Primary School and Nursery, we get an extra £1,320 for every eligible pupil who is registered for free school meals. This extra money could make a real difference to the quality of education we offer.

This year our Pupil Premium money has helped with:

- Learning assistants to work with individuals and small groups.
- Specific intervention support groups for pupils – Explore learning, Lexia, Easimaths, Third Space
- Part payments for families for school visits, clubs and activities
- ELSA support in school for children with emotional needs

Please take a form or ask at the school office. All you need to do is add your details and we will do the rest!

HOME SCHOOL LINK WORKER SUPPORT:



How Can I Help You?

- Enable parents/carers to discuss their worries and concerns.
- Support families whose children are experiencing difficult times, are anxious, finding school a challenge or reluctant to come to school.
- Support parents who are experiencing difficulties in managing their child's behaviour.
- Provide support to families on issues impacting on their family life.
- Offer support to improve attendance and communication between families and school.
- Guide Parents/Carers to other sources of help, advice and support for your family.
- Provide information on local and community support groups for Parents and Carers.
- Help you to access information and benefits.
- Offer guidance and parenting support.
- Run weekly coffee & catch-up sessions – which include targeted sessions from outside speaks (such as Mind Works) to paint and sip sessions.
- Monthly Newsletter
- Parental Self Care



RECEPTION PARENTS (ONLY)
COFFEE & CATCH UP
DATE: 01.10.25
TIME: 08:45AM-10AM
VENUE: THE LIGHTHOUSE
BARNSBURY, GU22 0BH



Contact Details:

Ambreen Ali
Home School Link Worker
Working Days: Mon - Tues
08:30 am until 3:00pm
Weds-Thurs 08:30 am until
1:00 pm (may vary some
weeks)

Any Questions?

info@barnsbury.surrey.sch.uk

