



19th June 2026

## A message from Miss Harbridge

As we move into our final half term of the academic year, there is a real sense of excitement across the school, mixed with the natural feeling of uncertainty that change can bring. This is a special time for reflection, celebration and looking ahead. Over the next couple of weeks, children and families will be informed about their new classes, and we know this is always an important moment in preparing for the year ahead.

We are also delighted to share an exciting development: from September, our classes will be named after British animals. This will help to build a strong sense of identity and belonging within each class—watch this space for more details!

A huge congratulations must go to our Year 3 and 4 Athletics Quads team for their outstanding achievement on Monday. Finishing 1st out of 17 schools is an incredible success. This accomplishment reflects not only the dedication and hard work of every child involved, but also the passion and encouragement of Mrs Darne and Mrs Living, who have supported the team so brilliantly.

There is much to look forward to as we approach the end of term, with a range of exciting events and activities planned. As the weather continues to improve, please take a moment to carefully read our guidance on sun safety. We also encourage you to engage with the parent guidance on the Zones of Regulation, which we launched today, to support children's emotional development both at school and at home.

## Zones of Regulation

The Zones of Regulation is a widely used framework that helps children develop skills in understanding and managing their emotions, behaviour, and sensory needs. It supports pupils to recognise how they are feeling and equips them with strategies to regulate themselves, leading to improved wellbeing and greater readiness to learn.

We have seen significant success through the consistent use of the Zones of Regulation in our Reception year group this year, and we are now extending this approach across the whole school.

### What are the Zones?

The framework groups feelings, emotions, and states of alertness into four coloured “zones”:

Blue Zone - when we are feeling sad, tired, unwell, or low

Green Zone - when we are calm, happy, focused, and ready to learn

Yellow Zone - when we are feeling worried, excited, frustrated, or losing some control

Red Zone - when we are feeling very angry, overwhelmed, or out of control

All zones are natural and experienced by everyone at different times. The aim is not to label behaviours as “good” or “bad,” but rather to help children understand their emotions and learn effective ways to respond.

# Barnsbury Primary School and Nursery Newsletter



“ Believe, Persevere, Succeed. ”

ZONES OF REGULATION			
BLUE ZONE	GREEN ZONE	YELLOW ZONE	RED ZONE
Sick Sad Tired Bored Hungry	Happy Calm Proud Brave Focused	Frustrated Worried Silly Excited Anxious	Hurt Terrified Mad Angry Out of control
Moving slowly	Ready to learn	Moving quickly	I need help.

Today we were delighted to launch our Barnsbury Zones of Regulation across the school.

Children explored Disney Pixar’s Inside Out through a new lens, helping them to better understand and talk about their emotions. Through a range of engaging sessions, pupils quickly recognised that all feelings are important—understanding, for example, that worry can help keep us safe and alert to potential risks.

At lunchtime, it was wonderful to hear children confidently discussing strategies they use to help themselves move between zones, both at school and at home. We look forward to building on this important work over the coming weeks and into the next academic year.



## Key Messages

KS1 Pirate Ship and Climbing Frames - We kindly ask that children do not play on the pirate ship or climbing frames in the Key Stage one playground after school. The gates will be locked at 3.10pm once all children have been collected. Thank you for your co-operation.

### Water Bottles, Sun Hats and Sunscreen

Now the weather is warming up, please could you ensure that your child brings their water bottle to school each morning along with a named sun hat and have sunscreen applied.

### Reminder: School Trees and Boundary Wall

Please can we kindly ask that the children do not play on the wall outside the school school office or climb the trees in the school grounds for health and safety reasons. The trees were also planted in memory of past staff members and we ask that everyone remembers our Barnsbury values and respects this.

### Reminder: Dogs Not Permitted on School Premises

Please can we remind you that dogs are not to be brought on to the school premises.

## Attendance

### The Importance of Good Attendance

Good attendance at school is one of the most important factors in supporting children's learning, wellbeing and future success. Research and national guidance are clear that the more time children spend in school, the more they learn, build confidence and make progress. Every day in the classroom matters, as learning is carefully planned and builds step by step over time.

We are determined to keep making our attendance as good as it can be, because being in school every day helps children to feel settled, secure and part of the school community. Regular attendance supports positive friendships, strong routines and good learning habits, all of which are essential for success both in school and beyond.

A hug well done to our winners so far:

W/C 8<sup>th</sup> June - 5D and 4B  
W/C 15<sup>th</sup> June - 5D and Pine Class

**Whole school attendance is  
currently 95.1% - let's keep the  
improvement going!**




# Barnsbury Primary School and Nursery Newsletter



“  
Believe,  
Persevere,  
Succeed.  
”

## Awards - week commencing 08/06

Star Award, Effort Award and Values Award			
Oak	All of Oak Class	Koby	Isaac
Pine	Alex	-	Logan
1B	Zara	Sayuni	Kaven
1M	Ameer	Robin	Haniya
2A	Angelica	Liv	Richard
2T	Senuk	Hashim	Shauna
3M	Joiah	Arla	Arthur
3MC	Azhaan	Lexi	Max
4B	Fin	Eddie	Isla-Rose
4J	Caitlin	All of 4J	Zach
5D	Khaleesi	Mara	Henry
5T	Frankie	Finlay	Holly
6G	Sedef	Kaylah	Nicole
6L	Jemima	Max	Grace O



## Awards - week commencing 08/06

Congratulations to our Super Speller of  
the Week:

Zaki - 5D



Congratulations to the recipients of a  
WOW certificates this week:

Maisie & Christopher - Oak  
Ella - Pine  
Harley - 4J  
Fin B - 4B  
Isla & Vadhana - 5T



## Congratulations to the Lionesses of the week:






# Barnsbury Primary School and Nursery Newsletter



“ Believe, Persevere, Succeed. ”

## Awards - week commencing 15/06

Star Award, Effort Award and Values Award			
Oak	Noha	Rohaan	Zac W
Pine	Logan	Asiyah	All of Pine Class
1B	Lucy	Sadie	Isra
1M	Gianna	Vichu	Eva
2A	Julia	Yana	Edmund
2T	Quinn	Ruobing	Jack
3M	Joe	Joiah	Jenson
3MC	Hannah	Vinnie	Benny
4B	Arwa	Daniel	Chloe S
4J	Isaac	Ulvi	Christian
5D	Daisy	Teniola	Khaleesi
5T	Holly	Violet	Cecilia
6G	Pippa	Dominik	Oscar S
6L	Theo	Ziena	Henry



## Awards - week commencing 15/06

Congratulations to our Super Speller of  
the Week:

Amelia - 3MC  
Lucy - 5D



Congratulations to the recipients of a  
WOW certificates this week:

Isra - 1B  
Poema - 4B



# Barnsbury Primary School and Nursery Newsletter



“  
Believe,  
Persevere,  
Succeed.  
”

## Dates for your diary 2026 - Summer Term

<b>June 2026</b>	
Wednesday 24th	Acorns Nursery Sports Day
Wednesday 24th	Parent Coffee Morning at The Lighthouse (on Barnsbury Estate), 08:45am - 10am
Wednesday 24th	Reception for September 2026 Intake Induction Evening - 6pm
Thursday 25th	Sports Day - KS1 AM, whole school picnic at lunchtime and KS2 PM.
Friday 26th	3M Class Assembly - 9am

<b>July 2026</b>	
Wednesday 1st	Parent Coffee Morning at The Lighthouse (on Barnsbury Estate), 08:45am - 10am
Friday 3rd	Pine Class Assembly - 9am
Saturday 4th	PTA Summer Fair, 12pm - 3pm
Wednesday 8th	Parent Coffee Morning at The Lighthouse (on Barnsbury Estate), 08:45am - 10am

# Barnsbury Primary School and Nursery Newsletter



“  
Believe,  
Persevere,  
Succeed.  
”

## Dates for your diary 2026 - Summer Term

July 2026 continued...	
Friday 10th	Oak Class Assembly - 9am
Wednesday 15th	Parent Coffee Morning at The Lighthouse (on Barnsbury Estate), 08:45am - 10am
Friday 17th	Moving Up Morning
Wednesday 22nd	Parent Coffee Morning at The Lighthouse (on Barnsbury Estate), 08:45am - 10am
Wednesday 22nd	End of Term - 1.15pm

# Barnsbury Primary School and Nursery Newsletter



“  
Believe,  
Persevere,  
Succeed.  
”

## Dates for your diary - Academic year 2026/2027

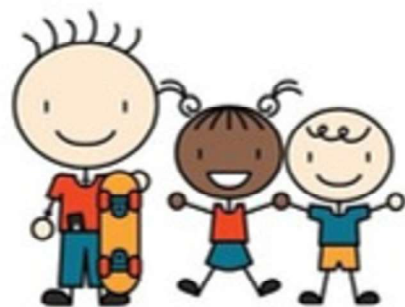
<b>September 2026</b>	
Tuesday 1st	Inset Day
Wednesday 2nd	Start of Term - 8.30am
Monday 7th - Friday 11th	Year 6 Residential
Wednesday 23rd - Friday 25th	Year 4 Residential

<b>October 2026</b>	
Monday 19th - Friday 30th	2 Week Half Term

<b>November 2026</b>	
Wednesday 11 <sup>th</sup> Nov	Individual and Sibling Photos



## FAMILY LEARNING



# Empower Your Child: Supportive Approaches to Manage Anxiety

Join our FREE workshop designed for parents. In this 2-hour session, you'll work with the tutor and other parents to deepen your understanding of anxiety and learn practical ways to support your child. No Children

### ✓ What you'll learn:

- Gain a deeper understanding of childhood anxiety.
- Practical ways to help your child manage anxious feelings.
- Opportunities to connect with other parents in a safe, supportive environment.

**Where:** Kingfield Primary School

Kingfield Road

Woking, Surrey, GU22 9EQ

**When:** 24<sup>th</sup> June 2026

**Time:** 09:15 -11:15



**To book your place please click  
on this link or scan the QR code**



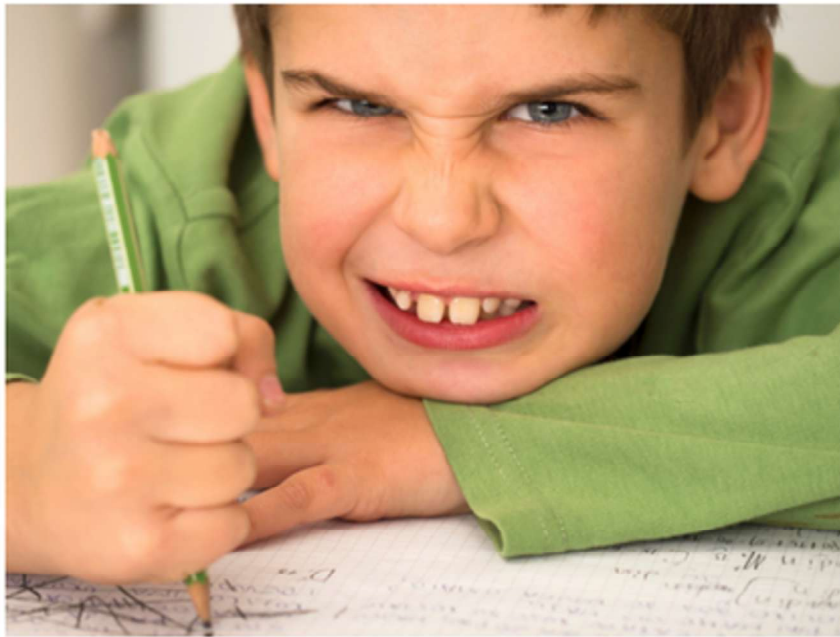
**Web :** [www.surreycc.gov.uk/familylearning](http://www.surreycc.gov.uk/familylearning)

**Email :** [family.learning@surreycc.gov.uk](mailto:family.learning@surreycc.gov.uk)

**Tel :** 0300 200 1044



# Helping an ADHD Child with Homework



**FREE** one hour online session for parents  
**Thursday 25<sup>th</sup> June 7pm - 8pm**

Join us online to get some advice on how to help your  
ADHD child start and complete their homework.

Book on the **PARENTS - Live Talks** page  
[facefamilyadvice.co.uk](http://facefamilyadvice.co.uk)

---

GET INVOLVED AND MAKE A DIFFERENCE

Join the Barnsbury Primary School & Nursery

**PTA**

Open to all Parents and Carers

## WHY JOIN?

### Your Child Benefits

The PTA is an important part of the school and **helps to enrich your child's learning** and make every student's experience at school better.

### Its Totally Flexible

Anyone can get involved. **It's less commitment than you think and you don't always have to attend meetings.** Small jobs such as designing a poster or running a stall, keeps everything running smoothly.

### Create Lasting Memories

Children will learn using resources we fund, cherish the activities and trips we organise and fund. As well as remember the events we hold. **Keep the PTA going so future pupils can benefit too.**

### Because its fun!

Be part of a team which organises the best fundraising events. Suggest new ideas, gain new skills, meet new people. **But most of all, have fun and be your children's biggest fan!**

To get involved please speak to a class rep or email the PTA  
[pta@barnsbury.surrey.sch.uk](mailto:pta@barnsbury.surrey.sch.uk)