

Barnsbury Primary School and Nursery Newsletter

(FORTNIGHTLY)



We nurture every
child in meeting their
potential without
limits.



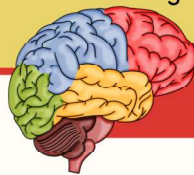
1st May 2026

A message from Miss Harbridge

Now that we are three weeks into the summer term, it has been lovely to see signs of the changing season across the school – it suddenly feels like the summer holidays (or at least the extended half term!) are around the corner. With brighter mornings and milder weather, classes are enjoying spending more time outdoors and making the most of our fantastic grounds. Year 1 have been particularly excited to head to Forest School, where they are building confidence, resilience and teamwork while exploring the natural world. I love hearing their joy each afternoon as they go on their adventures in their wellies, returning with muddy boots and smiles.

At the beginning of term, Year 3 enjoyed a fantastic trip to RHS Wisley, where they deepened their learning about plants, growth and habitats through hands-on experiences and expert-led activities. This visit brought learning vividly to life and sparked lots of thoughtful questions back in class.

Meanwhile, Year 6 are working incredibly hard as they prepare for their upcoming SATs; we are very proud of their focus and determination. Our Year 6 children truly are an asset to Barnsbury School, setting a wonderful example to younger pupils. As we head into the bank holiday weekend, we hope everyone is able to enjoy a well-earned rest and some time together with family and friends. We look forward to welcoming everyone back refreshed and ready for another busy and productive week ahead.



Brain Science

In assemblies this term, the children have been learning about brain science and how the brain helps us to think, learn and manage our feelings. They have shown great curiosity and enthusiasm as we explore how different parts of the brain work together to support us every day.

So far, we have focused on the cerebrum, learning that it is responsible for thinking, memory and decision-making, and on the cerebellum, which helps to control balance, movement and coordination.

These sessions have sparked thoughtful discussions, with children making links between brain function, learning behaviours and emotional regulation. Next week, our assemblies will focus on the pre-frontal cortex, helping children to understand its role in self-control, planning and making good choices. Developing this knowledge supports our wider work on resilience, wellbeing and positive behaviour across the school.



Key Messages

KS1 Pirate Ship and Climbing Frames - We kindly ask that children do not play on the pirate ship or climbing frames in the Key Stage one playground after school. The gates will be locked at 3.10pm once all children have been collected. Thank you for your co-operation.

Water Bottles, Sun Hats and Sunscreen

Now the weather is warming up, please could you ensure that your child brings their water bottle to school each morning along with a named sun hat and have sunscreen applied.

Reminder: Please Do Not Park in Staff Car Parks

We kindly ask parents and carers not to use the staff car parks at any time, including during drop-off and pick-up. Recently, several members of staff have been delayed because they were unable to access parking spaces. This has resulted in staff arriving late into school, which can affect the smooth running of the school day.

To help us ensure that classrooms are ready, pupils are welcomed safely, and learning begins on time, please use the designated visitor or on-street parking areas instead.

We appreciate your cooperation and support in keeping our school safe, efficient, and accessible for everyone. Thank you.

Attendance

The Importance of Good Attendance

Good attendance at school is one of the most important factors in supporting children's learning, wellbeing and future success. Research and national guidance are clear that the more time children spend in school, the more they learn, build confidence and make progress. Every day in the classroom matters, as learning is carefully planned and builds step by step over time.

We are determined to keep making our attendance as good as it can be, because being in school every day helps children to feel settled, secure and part of the school community. Regular attendance supports positive friendships, strong routines and good learning habits, all of which are essential for success both in school and beyond.

From next week...

Alfred and Edgar the Ultimate Attendance Champions will be awarded to the two classes with the best attendance each week.

The class will have to take the best selfie with Alfred or Edgar to be in with a chance of winning the half-termly class reward!



Barnsbury Primary School and Nursery Newsletter



“
Believe,
Persevere,
Succeed.
”

Girls Football Match - Barnsbury Vs St Dunstons

Firstly, I am beyond proud of our girls! What a team effort!

On Wednesday, 15th April, our Barnsbury girls' football team played an intense hour-long contest across four hard-fought quarters, with both teams delivering a performance full of grit, momentum swings, and standout moments. It was a last-minute fixture, so I had to pull a team together with little notice myself and to the parents (I'm so sorry!). With no substitutions available, every player was pushed to their limits, and the match became a true test of endurance as much as skill.

Barnsbury opened beautifully, settling quickly as a team and taking control of the early exchanges. Their sharp passing and pressure paid off with a well-worked goal, giving them a deserved 1-0 lead from Emily and setting the tone for what looked like a promising afternoon against St Dunstan's. St Dunstan's responded well in the next two quarters, scoring twice in quick succession. The two goals came close together, which could have unsettled us, but the team settled again and stayed in the game. What followed was the highlight of the match: an extraordinary long-range strike from Emily, a goal that stunned both teams. Riding that wave of energy, the team pushed forward again and found a well-earned equaliser, bringing the score to 3-3 and setting up a thrilling final quarter.

Both teams worked hard in the final quarter, with play becoming more end-to-end as the match wore on. A late free kick for the opposition gave them a chance, and they scored shortly before the final whistle, leaving the game to finish 4-3.

A massive well done to our team:

Rachael - superb goalie!! Some incredible saves!!

Rosie - solid in that defence. You have grown so much in your understanding of the game.

Harriet - great marking up of players, listening and responding to guidance.

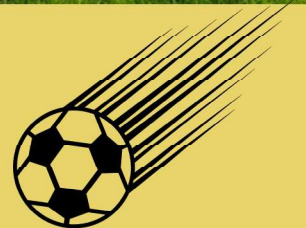
Grace - huge coverage of the pitch, amazing in defence and getting that ball away.

Orla - huge effort put in today, and getting into those spaces ready for your opportunity on goal...next time.

Emily - 3 amazing goals!! Coverage of the pitch. Thank you so much for stepping in at the last moment!

Chloe - Huge effort from you! So close to a goal! Thank you for being adaptable and playing in a position you don't normally play. A HUGE thank you to the parents who came to watch and support! I get nervous myself, and having other supporters there to talk to helps.

Miss Paice
Girls Football Coach



Barnsbury Primary School and Nursery Newsletter



“
Believe,
Persevere,
Succeed.
”

Awards - week commencing 13/04

Star Award, Effort Award and Values Award			
Oak	Reya	Ethan	Amy
Pine	Royce	Lily	Olivia
1B	Lola	Ronnie	Billy
1M	Lottie	Florence	Reggie
2A	Aliza	Imaan	Louis
2T	Hugo	Liyana	Cooper
3M	Reggie	Jenson	Damari
3MC	Nate	Aliza	Arthur
4B	William	Roslyn	Jude
4J	Maximus	Zachary	Cormac
5D	William	Callan	Chiram
5T	Maya-Mae	Jonathan	Precious
6G	Abigail	Dexter	James
6L	Ziena	Maria	Jack



Awards - week commencing 13/04

Congratulations to our Super Speller of
the Week:



Congratulations to the recipients of a
WOW certificates this week:

Koby - Oak
Emily - 4B
Saph - 4J






Barnsbury Primary School and Nursery Newsletter



“
Believe,
Persevere,
Succeed.
”

Awards - week commencing 20/04

Star Award, Effort Award and Values Award			
Oak	Oliviia	Pimry	Zac T
Pine	Harry	Arlo	Amin
1B	Harry	Conor	Lyra
1M	Thalia	Treasure	Maya
2A	Ava	Danny	Michael
2T	Miguel	Lenny	Vinnie
3M	Auriella	Hannah	Emily
3MC	Isla	Kabir	Aboudy
4B	Sehas	Chloe G	Niyam
4J	Luna	Theo C	Molly
5D	Flo	Jimmy	Jayden
5T	Kyra	Flint	Ava
6G	Emma	Mia & Joao	George H
6L	Ben	Rachael	Lydia



Awards - week commencing 20/04

Congratulations to our Super Speller of
the Week:

Josh - 5D



Congratulations to the recipients of a
WOW certificates this week:

Azhaan - 3MC
Amirah - 3MC
Vinny - 3MC
Kiki - 4B
Matthew - 4B
Sarah Luisa - 4B



Congratulations to the Lionesses of the week:






Barnsbury Primary School and Nursery Newsletter



“
Believe,
Persevere,
Succeed.
”

Awards - week commencing 27/04

Star Award, Effort Award, Values Award & Writer of the Month				
Oak	Koby	Zac W	Arjun	Christober
Pine	Lily	Bella	Anabia	Jasper
1B	Chloe	Umai	Sayuni	Conor
1M	Robert	Jorge	Florence	Aaryadeep
2A	Jack P	Ohene	Paul	Jack P
2T	Aila	Haziq	Felicity	Flora
3M	Mikael	Emily P	Reggie	Ekow
3MC	Jessica	Zayan	Tommy	Jaswik
4B	Kiki	Ewan	Catrin	Emily R
4J	Fin	Avy	Synthia	George
5D	Margot	Chiram	Abubakr	Leo
5T	Abram	Mila	Natalia	James D
6G	Zoe	Ben	Spencer	George A
6L	Sasha	Grace O	Harry	Rachael



Awards - week commencing 27/04

Congratulations to our Super Spellers
of the Week:

Kashif - 3MC

Callan - 5D



Congratulations to the recipients of a
WOW certificates this week:

Navie - Oak

Kyra - 5T

Isla - 6G

Jake - 6G

Will - 6G

Vinnie - 6G

James - 6G

Zoe - 6G



Barnsbury Primary School and Nursery Newsletter



“
Believe,
Persevere,
Succeed.
”

Dates for your diary 2026 - Summer Term

May 2026	
Monday 4th	Bank Holiday
Wednesday 6th	Parent Coffee Morning at The Lighthouse (on Barnsbury Estate), 08:45am - 10am
Friday 8th	3MC Class Assembly - 9am
Friday 8th	PTA Pre Loved Uniform Sale - 2:45pm-3:30pm
Wednesday 13th	Parent Coffee Morning at The Lighthouse (on Barnsbury Estate), 08:45am - 10am
Friday 15th	2T Class Assembly - 9am
Friday 15th	PTA Raffle Draw - KS1 Hall - 3:15pm
Wednesday 20th	Class Photos
Wednesday 20th	Parent Coffee Morning at The Lighthouse (on Barnsbury Estate), 08:45am - 10am
Thursday 21st	Reception Pirate Dress Up Day
Friday 22nd	2A Class Assembly
Friday 22nd	PTA Non-Uniform Day

Barnsbury Primary School and Nursery Newsletter



“
Believe,
Persevere,
Succeed.
”

Dates for your diary 2026 - Summer Term

Monday 25 th May - Friday 5 th June	2 Week Half Term
--	------------------

June 2026	
Wednesday 10 th	Parent Coffee Morning at The Lighthouse (on Barnsbury Estate), 08:45am - 10am
Tuesday 16 th	PTA Pre Loved Uniform Sale - 2:45pm-3:30pm
Wednesday 17 th	Parent Coffee Morning at The Lighthouse (on Barnsbury Estate), 08:45am - 10am
Wednesday 24 th	Acorns Nursery Sports Day
Wednesday 24 th	Parent Coffee Morning at The Lighthouse (on Barnsbury Estate), 08:45am - 10am
Wednesday 24 th	Reception for September 2026 Intake Induction Evening - 6pm
Thursday 25 th	Sports Day - KS1 AM, whole school picnic at lunchtime and KS2 PM - Times to be confirmed.
Friday 26 th	3M Class Assembly - 9am

Barnsbury Primary School and Nursery Newsletter



“
Believe,
Persevere,
Succeed.
”

Dates for your diary 2026 - Summer Term

July 2026	
Wednesday 1st	Parent Coffee Morning at The Lighthouse (on Barnsbury Estate), 08:45am - 10am
Friday 3rd	Pine Class Assembly - 9am
Wednesday 8th	Parent Coffee Morning at The Lighthouse (on Barnsbury Estate), 08:45am - 10am
Friday 10th	Oak Class Assembly - 9am
Wednesday 15th	Parent Coffee Morning at The Lighthouse (on Barnsbury Estate), 08:45am - 10am
Friday 17th	Moving Up Morning
Wednesday 22nd	Parent Coffee Morning at The Lighthouse (on Barnsbury Estate), 08:45am - 10am
Wednesday 22nd	End of Term - 1.15pm

Barnsbury Primary School and Nursery Newsletter



“
Believe,
Persevere,
Succeed.
”

Dates for your diary - Academic year 2026/2027

September 2026	
Tuesday 1st	Inset Day
Wednesday 2nd	Start of Term - 8.30am
Monday 7th - Friday 11th	Year 6 Residential
Wednesday 23rd - Friday 25th	Year 4 Residential

October 2026	
Monday 19th - Friday 30th	2 Week Half Term

November 2026	
Wednesday 11 th Nov	Individual and Sibling Photos

GET INVOLVED AND MAKE A DIFFERENCE

Join the Barnsbury Primary School & Nursery

PTA

Open to all Parents and Carers

WHY JOIN?

Your Child Benefits

The PTA is an important part of the school and **helps to enrich your child's learning** and make every student's experience at school better.

Its Totally Flexible

Anyone can get involved. **It's less commitment than you think and you don't always have to attend meetings.** Small jobs such as designing a poster or running a stall, keeps everything running smoothly.

Create Lasting Memories

Children will learn using resources we fund, cherish the activities and trips we organise and fund. As well as remember the events we hold. **Keep the PTA going so future pupils can benefit too.**

Because its fun!

Be part of a team which organises the best fundraising events. Suggest new ideas, gain new skills, meet new people. **But most of all, have fun and be your children's biggest fan!**

To get involved please speak to a class rep or email the PTA
pta@barnsbury.surrey.sch.uk